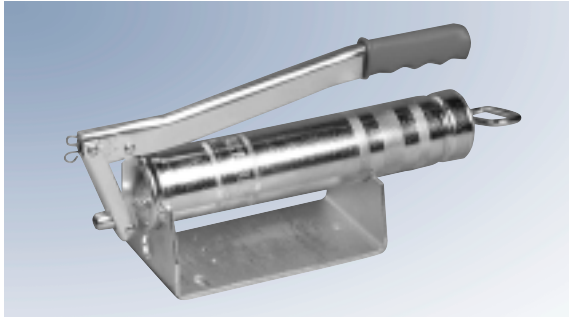
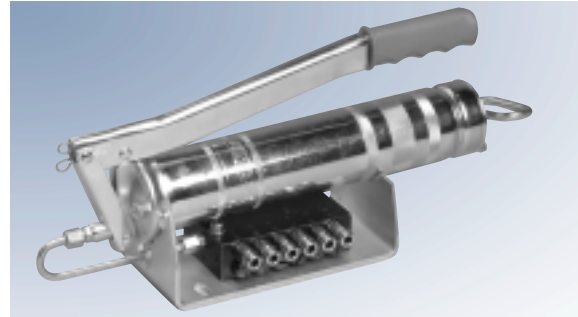


# HP500 and HP500-SSV Pumps



HP500W



HP500W-SSV

The manual pumps HP500W and HP500W-SSV offer a special low-cost possibility of equipping a machine with a manual central lubrication pump.

The pumps are used where no automatic or continuous lubricant supply is required, but where a simple lubrication process by a central lubrication pump is desired.

The filling of the grease reservoir can be performed by means of a standard 400 g cartridge, or directly from a grease barrel or with a filling pump.

Part No.	Description	Reservoir Capacity			Number of Outlets
		Liters	In <sup>3</sup>	Lbs.	
244-14164-1	HP500W	0.5	30	1	1
604-28766-1	HP500W-SSV6	0.5	30	1	2 – 6
604-28767-1	HP500W-SSV8	0.5	30	1	2 – 8
604-28768-1	HP500W-SSV10	0.5	30	1	2 – 10
604-28769-1	HP500W-SSV12	0.5	30	1	2 – 12

## Technical Data

	HP500W	HP500W-SSV
lubricant output per stroke	1.5 cm <sup>3</sup> (0.091 in <sup>3</sup> )	
lubricant output per metering device outlet	0.2 cm <sup>3</sup> (0.012 in <sup>3</sup> )	
outlet thread connection	M10 x 1 female	R1/8 female (BSPT)*
maximum operating pressure	400 bar (5800 psi)	350 bar (5076 psi)
suitable lubricants	NGLI 2 grease	

\* see SSV metering devices for outlet fittings